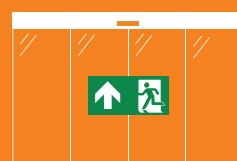


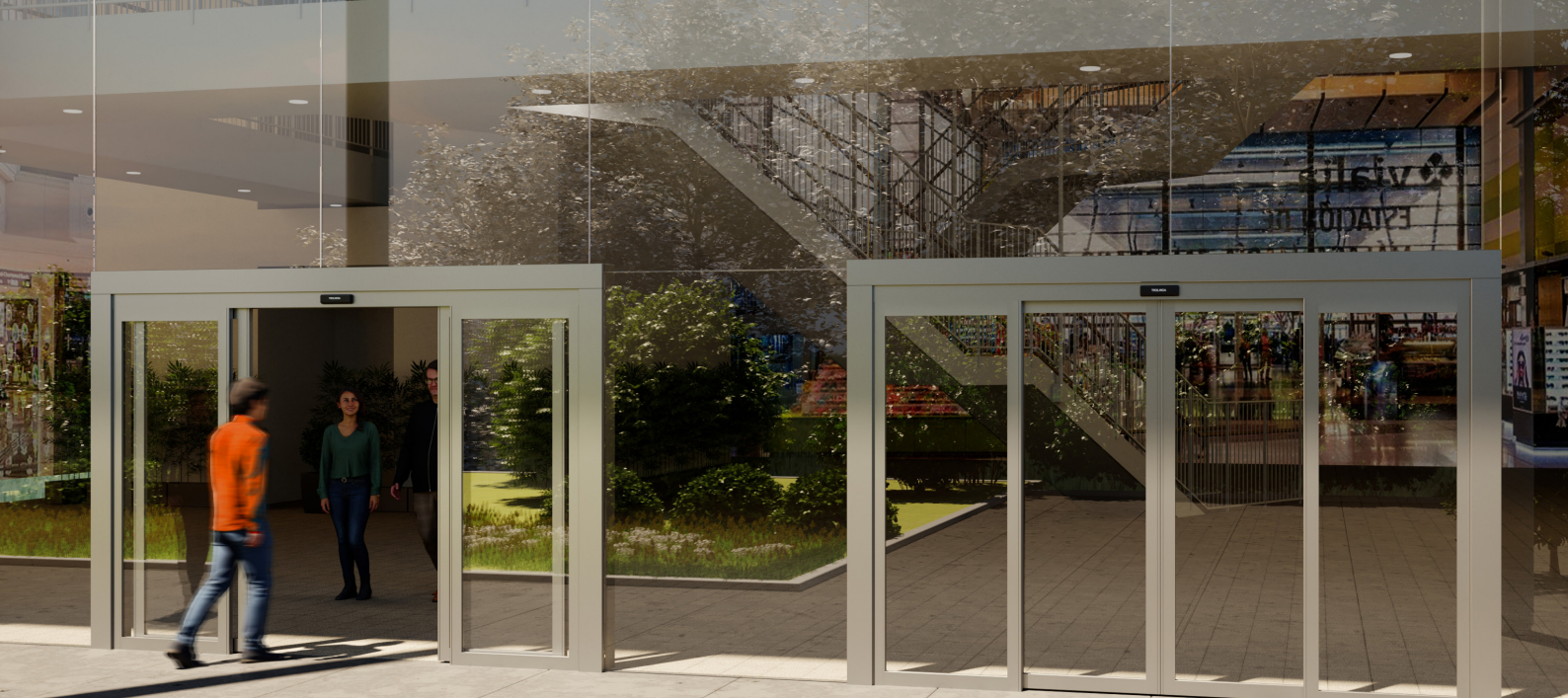
A
Z
L
R
T



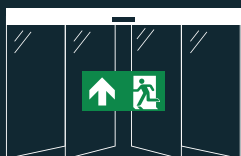
EMERGENCY EXIT

Emergency exit doors allow the **continuous traffic of people ensuring the organised and safe exit of the public in evacuation and emergency situations.**

Recommended for public buildings, airports and shopping centres.

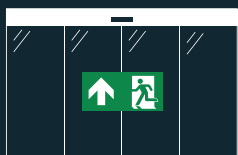


BREAK-OUT DOORS



Doors with a break-out system consist of doors with one or more moving leaves that operate as usual sliding doors but, in the event of an emergency, the movable and fixed leaves can be swung open by manually pushing them outwards, the leaves independently position themselves at the sides to open a wide evacuation area in the event of an emergency.

REDUNDANT DOOR



The electronics used for all our automations are **homologated for 'd' performance level** and can therefore be used as a fire brigade-approved 'redundant' emergency exit.

Types of leaves

20 mm profile for
10 mm mortise glass

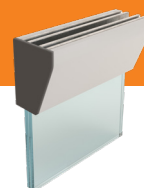


only available
for redundant door

45 mm leaf with
glazing bead



All-glass leaf with
clamp attachment





Sensors



Infrared sensor for presence and motion detection.

Useful as a side **security sensor**.



Infrared sensor for presence and motion detection.

Large detection and safety area.



Infrared and microwave sensor with supervisory control and wide adjustment.

Used for emergency exits.

Selectors

The selectors are used to select one of the 4 door operating modes: **automatic, locked, exit only or open.**

DIGITAL selector



KEY selector

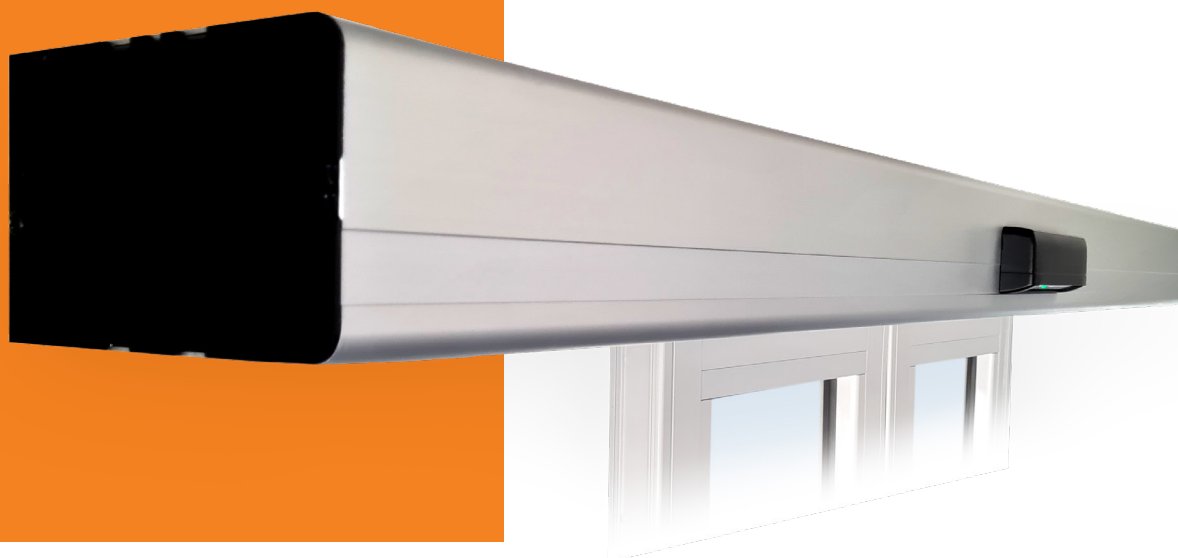


WIRELESS selector



Other accessories

- ▶ Contactless opening
- ▶ Opening button
- ▶ Interlocking system
- ▶ Badge opening
- ▶ External opening key
- ▶ Automatic lock



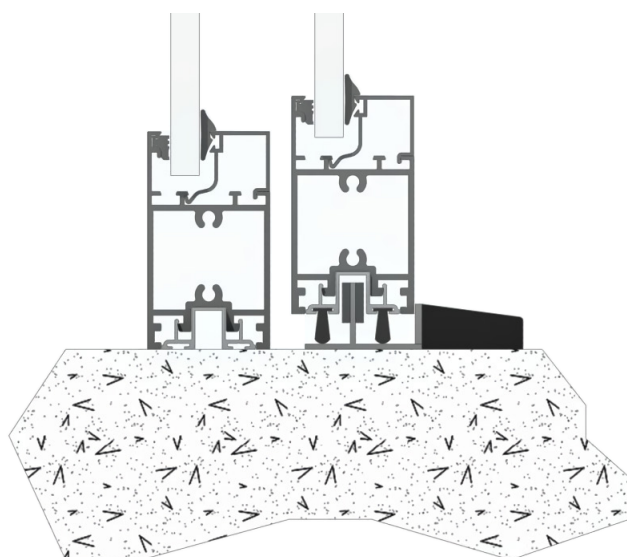
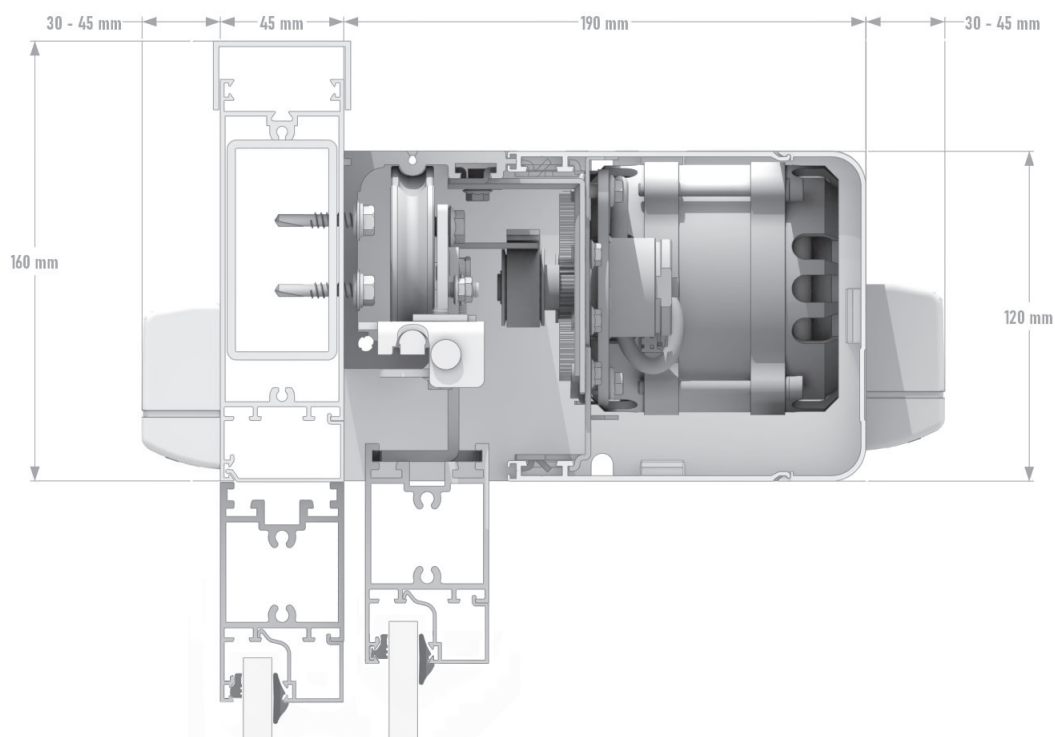
Application regulations

- ▶ Machinery Directive 2006/42/CE
- ▶ Low Voltage Directive 2006/95/CE
- ▶ Construction Products Regulation 305/2011/CE
- ▶ Electromagnetic Compatibility Directive 2004/108/CE
- ▶ Safety in use EN 16005
- ▶ Product Standard EN 16361

Technical features

| | |
|------------------------------------------|-----------------------------------------------------|
| Single motor | 110W |
| Double motor | 220W |
| Standard power supply | 220-240V - 50-60Hz |
| Operating temperature | from -15°C to 50°C |
| Rechargeable fail-safe batteries | 1x26.4V@700 mAh |
| Standard operator dimensions | 120x190 mm |
| Double telescopic operator dimensions | 120x250 mm |
| Recommended maximum free height | 2400 mm |
| Maximum clearance | 800 mm / 2600 mm depending on the door type |
| Opening speed for each leaf side/central | from 0.4 m/s to 1 m/s - from 0.8 m/s to 2 m/s |
| Closing speed for each leaf side/central | from 0.15 m/s to 0.6 m/s - from 0.30 m/s to 1.2 m/s |
| Maximum acceleration | 1.5 m/s |

SIDE AND CENTRAL SLIDING DOORS



Side



Central



Maximum weight per leaf

| | 1 leaf - side sliding | 2 leaves - central sliding |
|--------------|-----------------------|----------------------------|
| Single motor | 90 kg | 60 kg |
| Double motor | 120 kg | 90 kg |

Some of our
installations





Visit our website
trelinea.com for more
installations.

Let's keep in
TOUCH

trelinea.com

