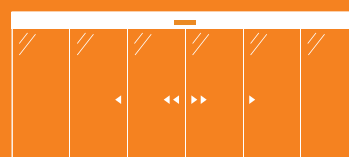


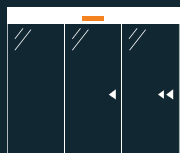
# TRELINEA



## 2- AND 4-LEAF TELESCOPIC DOOR

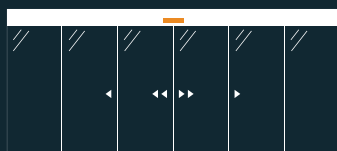
**Telescopic doors** are the suitable solution for a **wide free passage in the central area of the door while having limited space available.**

Recommended for car dealers and public buildings, as corridor dividers or where space is limited.



## SIDE-OPENING TELESCOPIC DOOR

**Side-opening telescopic doors** consist of 2 or more mobile leaves that open sideways with an elegant and synchronised movement, leaving a wide free passage even where there are space restrictions.



## CENTRAL OPENING TELESCOPIC DOOR

**Central opening telescopic doors** consist of 4 sliding leaves that move 2 by 2 in opposite directions with an elegant and synchronised movement, leaving a wide free passage in the central area. Particularly suitable for large openings.

## Types of leaves

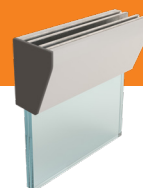
20 mm profile for  
10 mm mortise glass



45 mm leaf with  
glazing bead



All-glass leaf with  
clamp attachment





# Sensors



**Infrared sensor** for presence and motion detection.

Useful as a side **security sensor**.



**Infrared sensor** for presence and motion detection.

**Large detection and safety area.**



**Infrared and microwave sensor** with supervisory control and wide adjustment.

**Used for emergency exits.**

# Selectors

The selectors are used to select one of the 4 door operating modes:  
**automatic, locked, exit only or open.**

**DIGITAL selector**



**KEY selector**

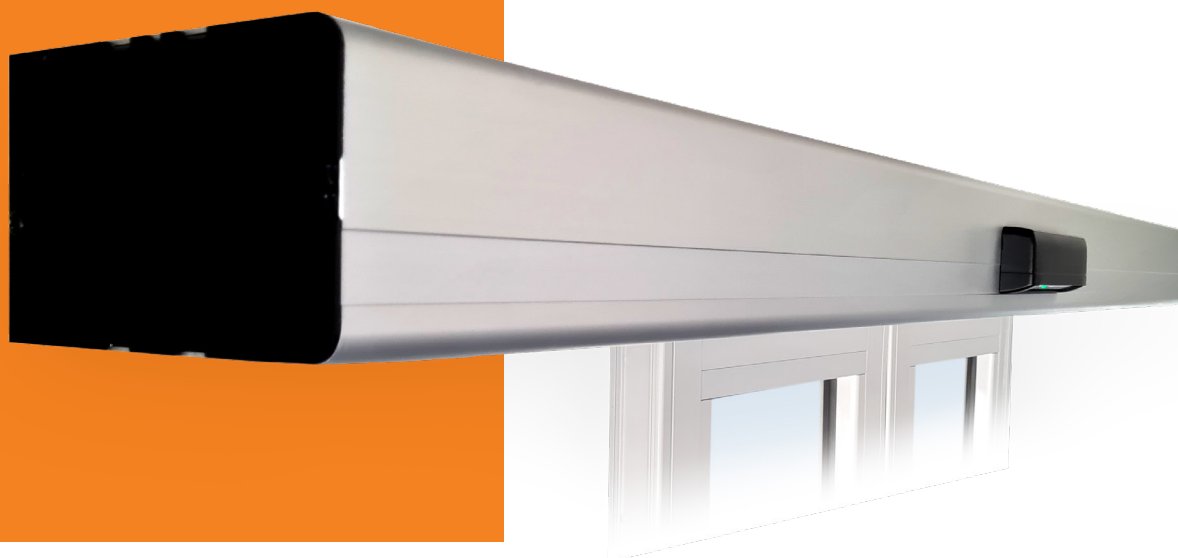


**WIRELESS selector**



# Other accessories

- ▶ Contactless opening
- ▶ Opening button
- ▶ Interlocking system
- ▶ Badge opening
- ▶ External opening key
- ▶ Automatic lock



## Application regulations

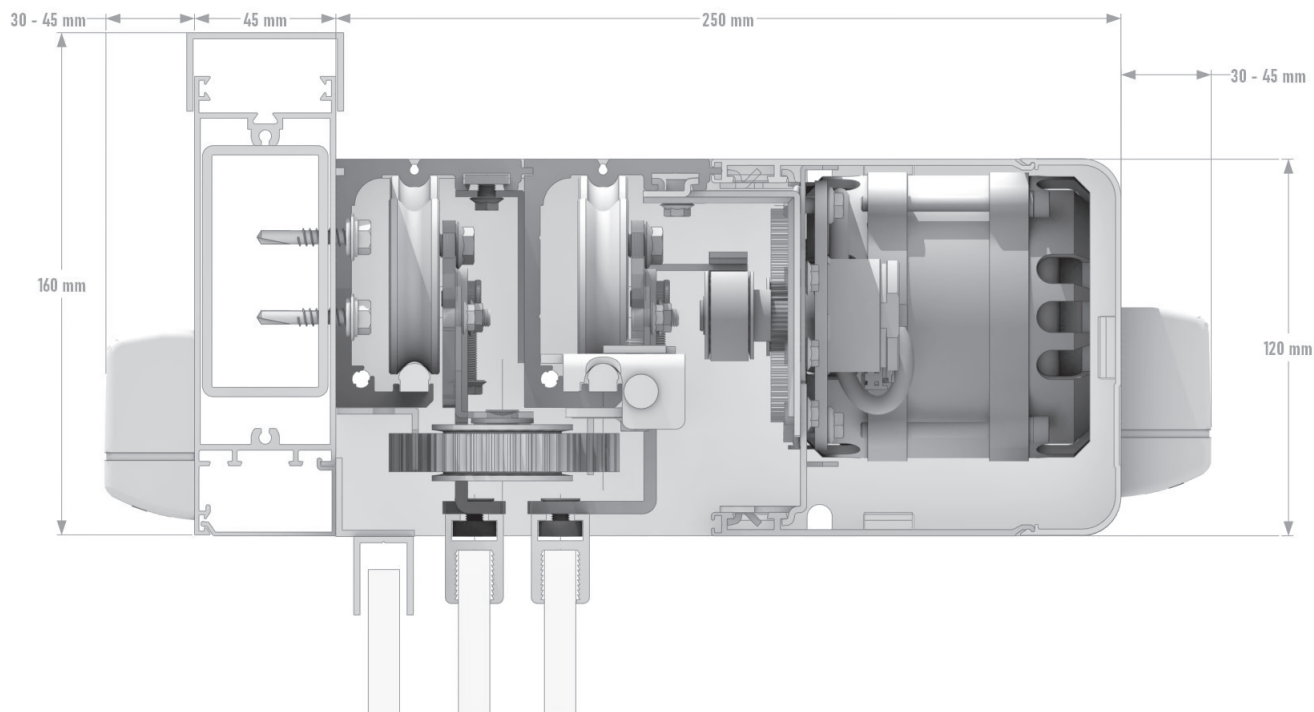
- ▶ Machinery Directive 2006/42/CE
- ▶ Low Voltage Directive 2006/95/CE
- ▶ Construction Products Regulation 305/2011/CE
- ▶ Electromagnetic Compatibility Directive 2004/108/CE
- ▶ Safety in use EN 16005
- ▶ Product Standard EN 16361

## Technical features

Single motor	110W
Double motor	220W
Standard power supply	220-240V - 50-60Hz
Operating temperature	from -15°C to 50°C
Rechargeable fail-safe batteries	1x26.4V@700 mAh
Standard operator dimensions	120x190 mm
Double telescopic operator dimensions	120x250 mm
Recommended maximum free height	2400 mm
Maximum clearance	800 mm / 2600 mm depending on the door type
Opening speed for each leaf side/central	from 0.4 m/s to 1 m/s - from 0.8 m/s to 2 m/s
Closing speed for each leaf side/central	from 0.15 m/s to 0.6 m/s - from 0.30 m/s to 1.2 m/s
Maximum acceleration	1.5 m/s



# TELESCOPIC DOUBLE SIDE AND CENTRAL SLIDING



Side



Central



## Maximum weight per leaf

	2 leaves - central sliding
Double motor	80 kg

Some of our  
**installations**







Visit our website  
**trelinea.com** for more  
installations.

Let's keep in  
**TOUCH**

---

**trelinea.com**

